

Passo a passo SisGado



Contato: telefone +55 16 3362 3362
Vendas Whatsapp: +55 16 99615-0641
Suporte Whatsapp: +55 16 99402-8185



Requisitos

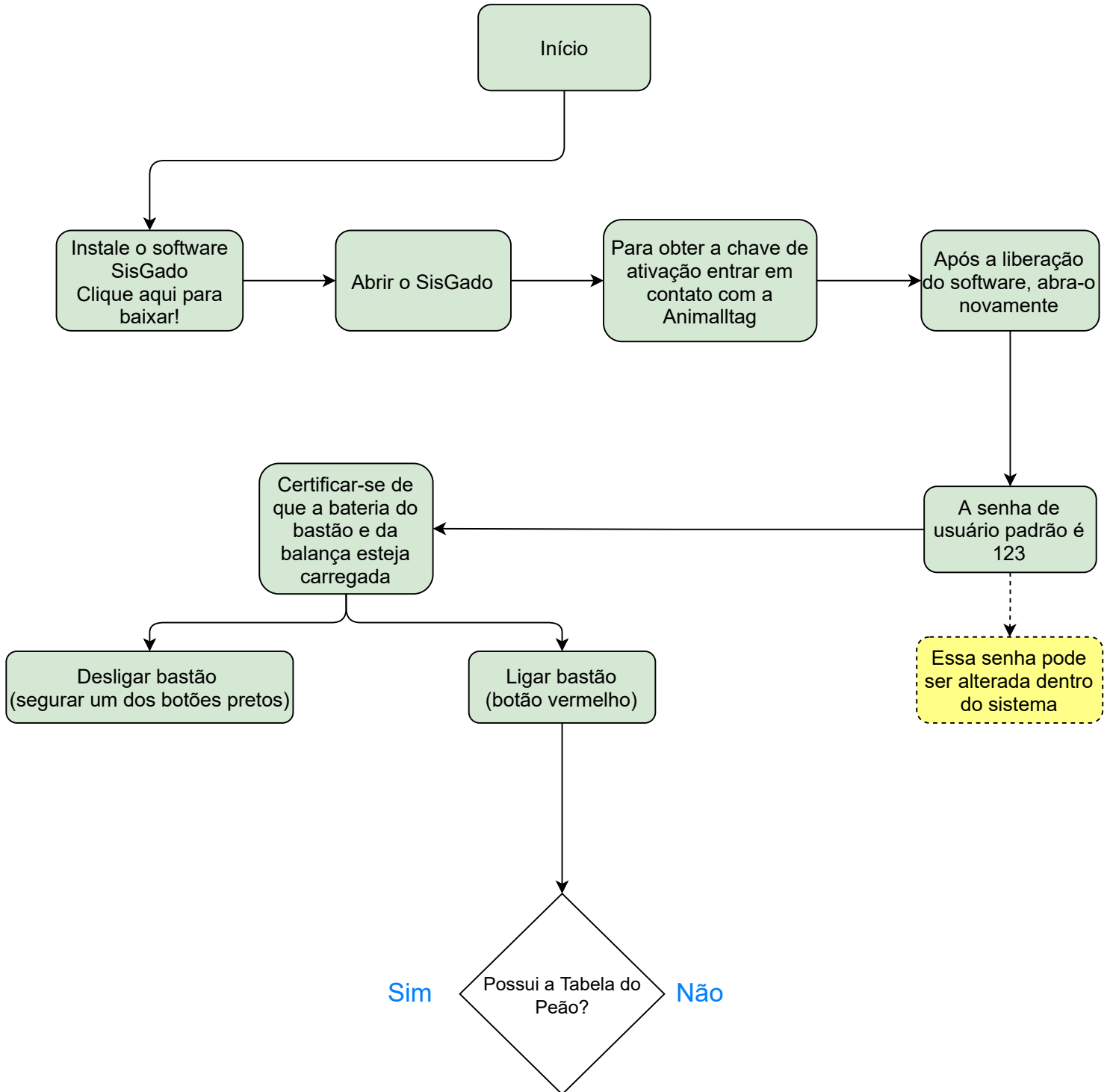
- 1. Leitor bastão e/ou balança;**
- 2. Barras (opcional);**
- 3. Cartões: configuração, enviar microchip e apagar memória;**
- 4. Computador com o sistema operacional Windows 10;**
- 5. Microchips**
- 6. Tabela do peão (opcional)**



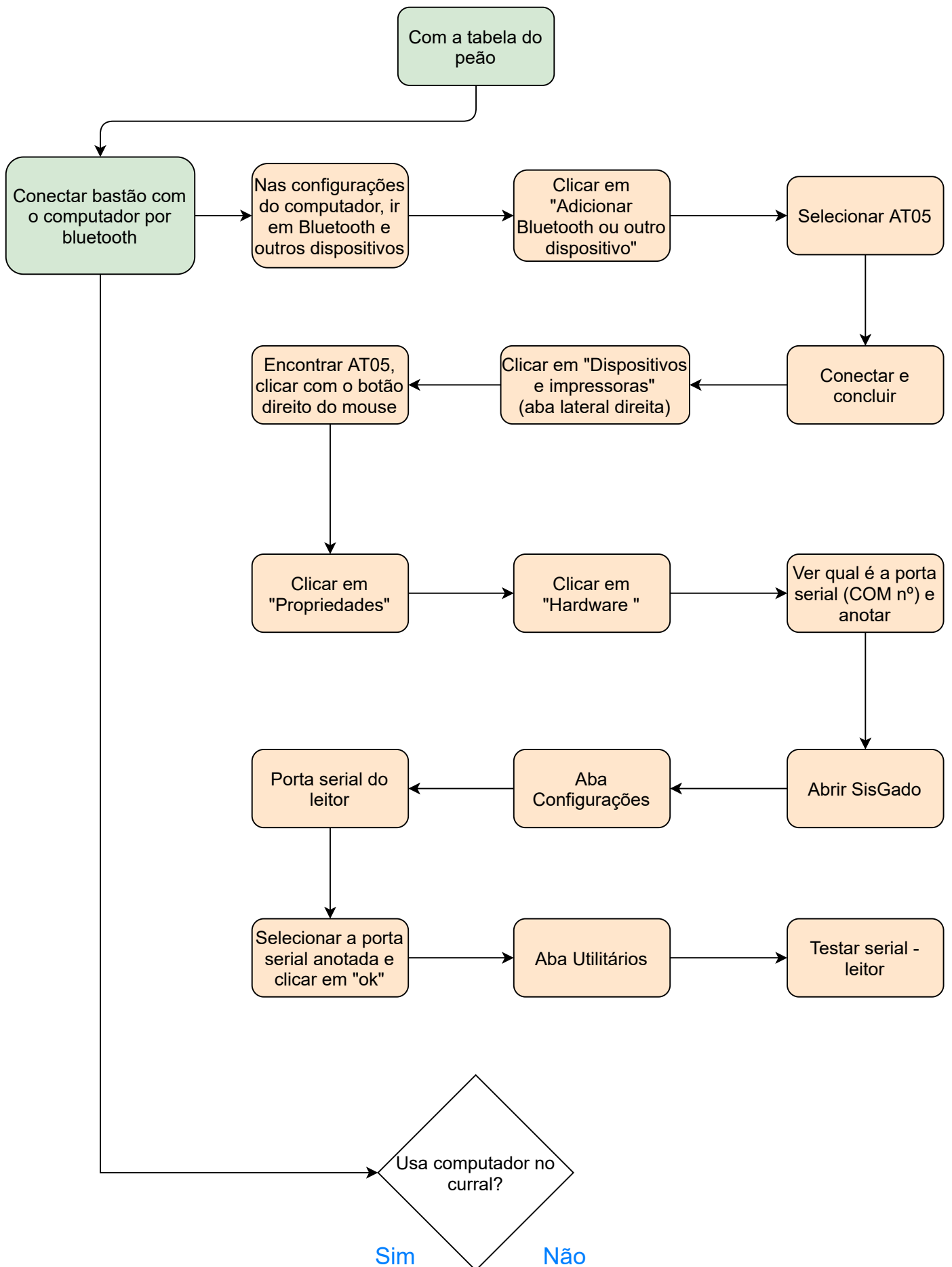
Índice

1.	Introdução	04
2.	Com Tabela do Peão	05
2.3.	Com Computador no Curral	06
2.2.	Sem Computador no Curral	07
3.	Sem Tabela do Peão	11
3.2.	Adicionar Dados por Bluetooth	12
3.2.	Adicionar dados Manualmente	14
4.	Outros	15
4.1.	Apartação	15
4.2.	Transferir Dados	16

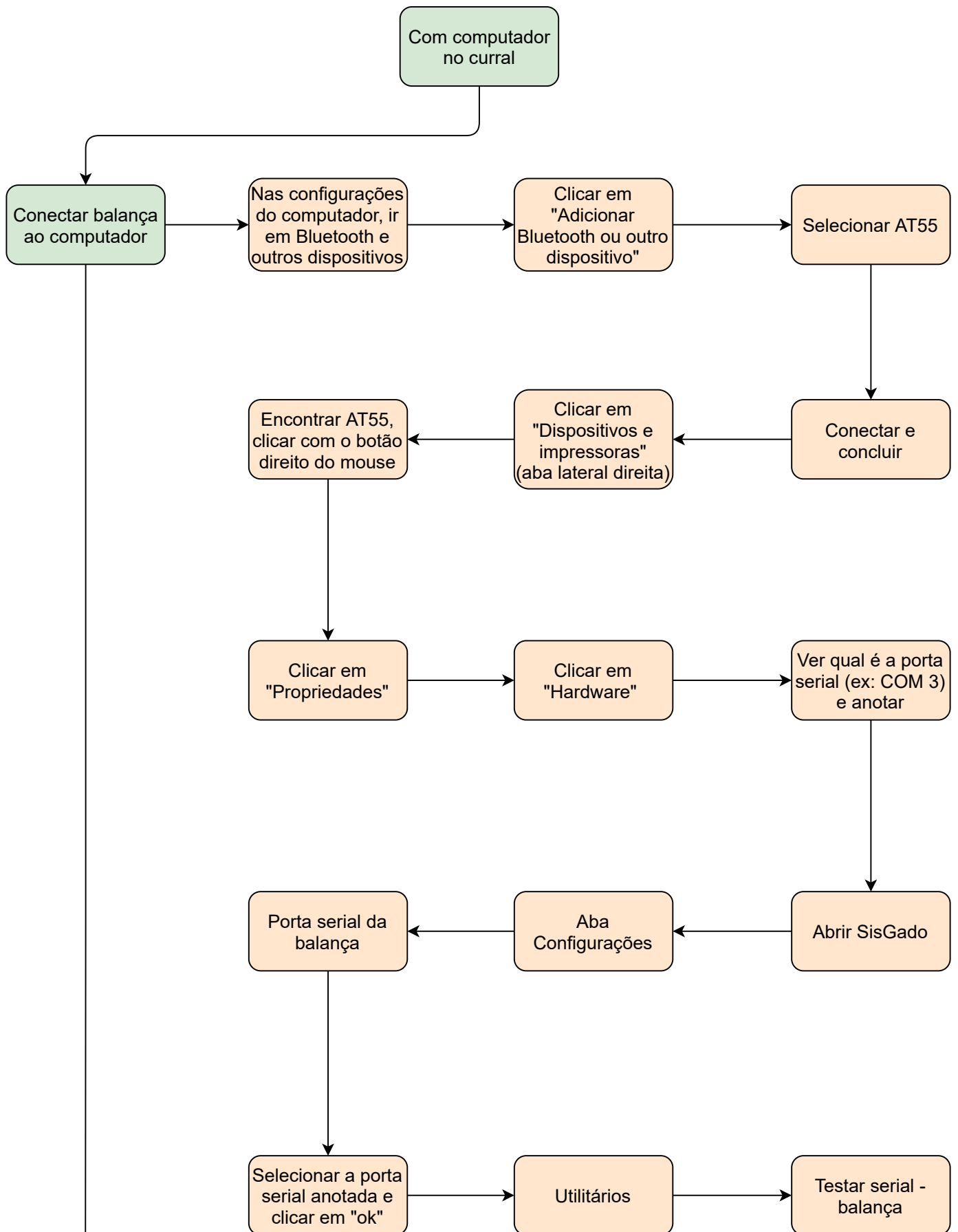
1. Introdução

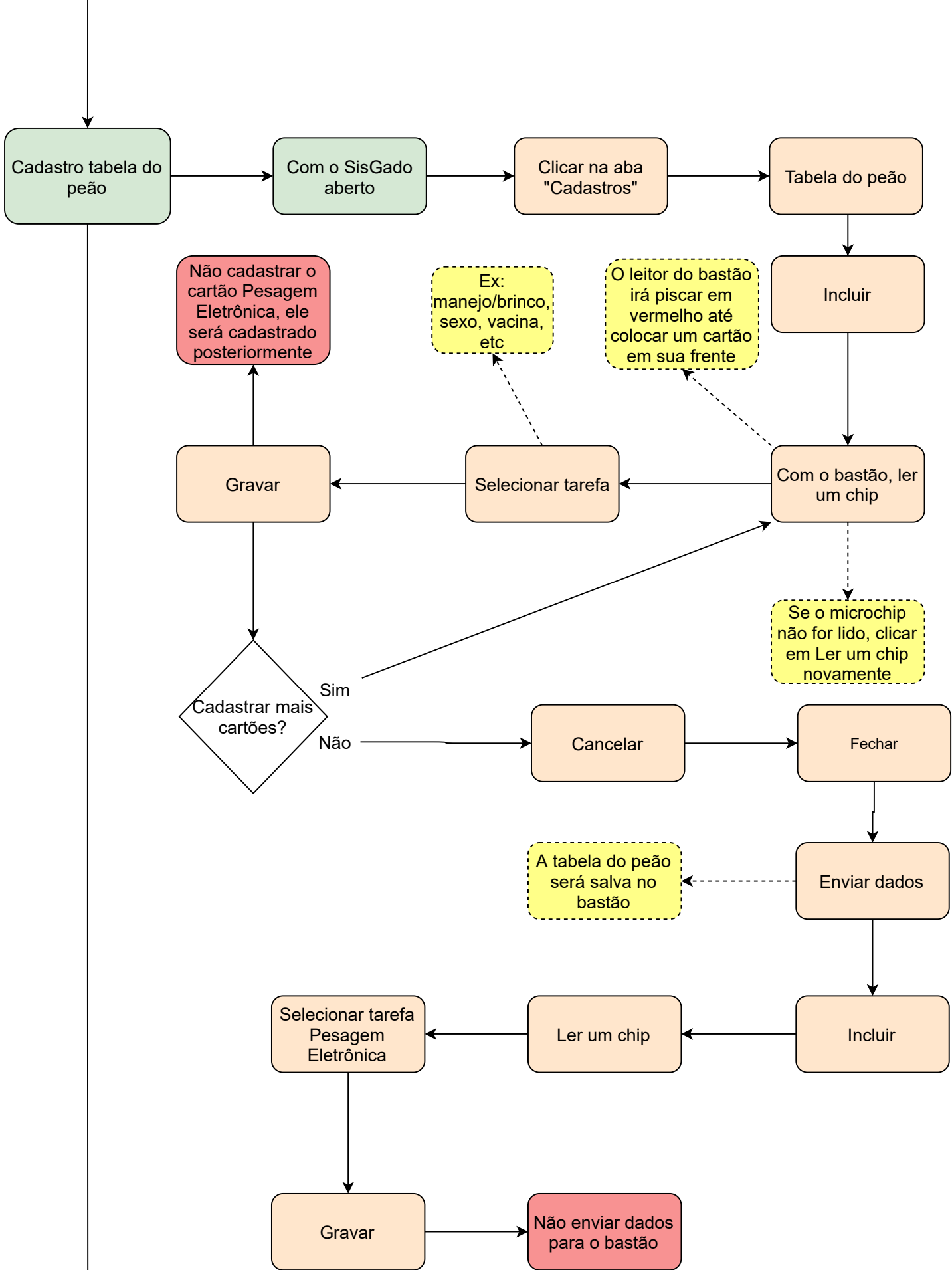


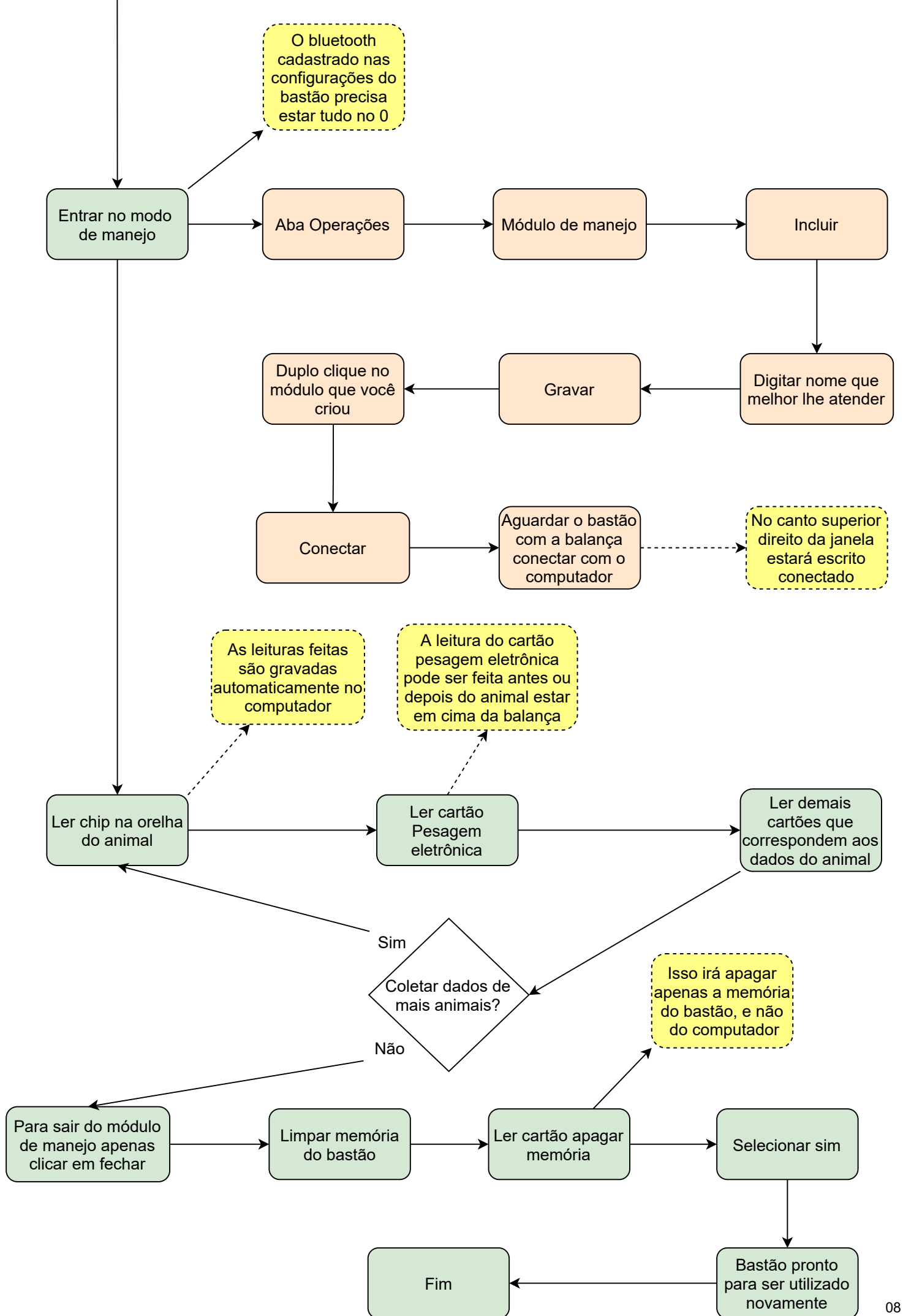
2. Com tabela do peão



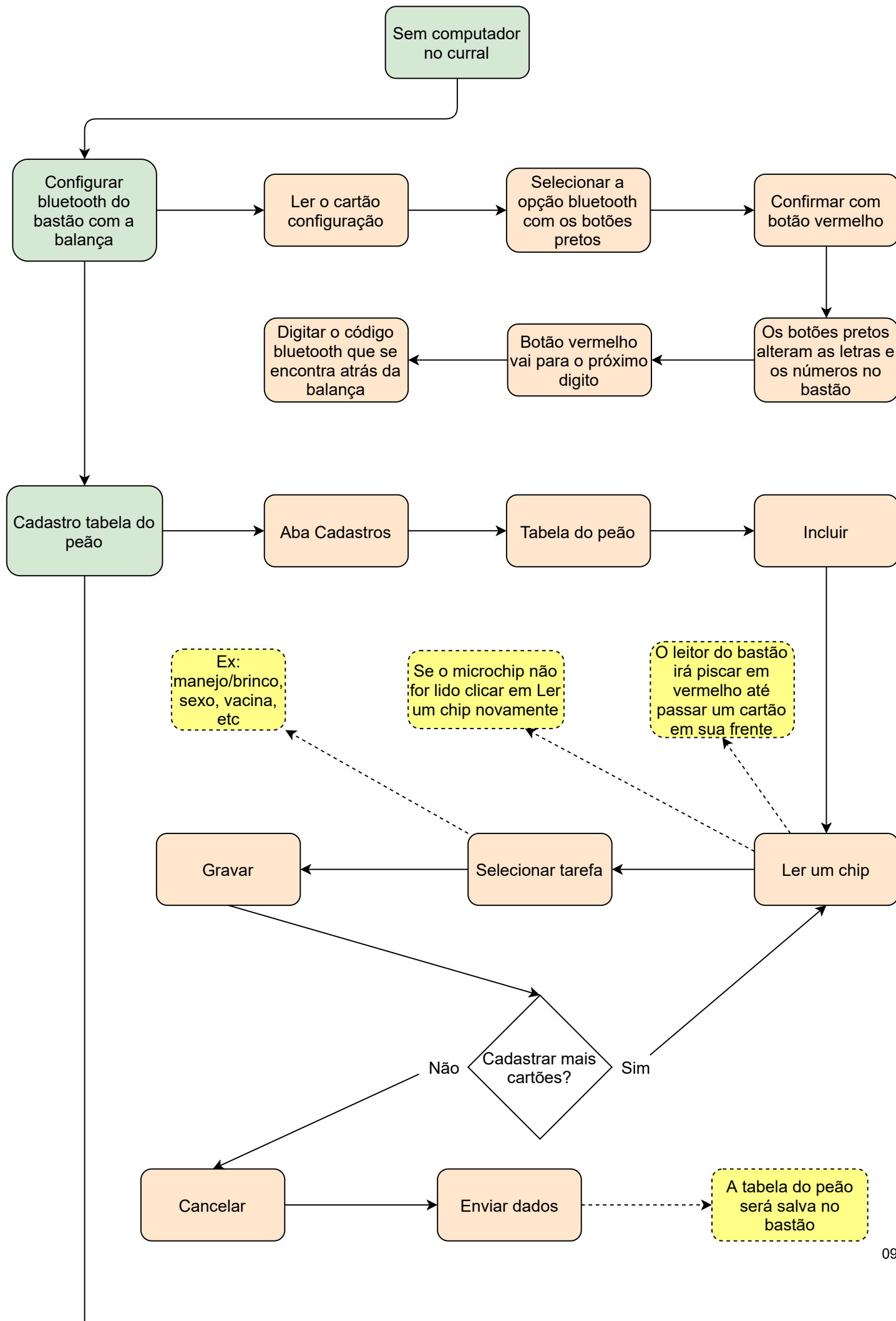
2.1. Com computador no curral

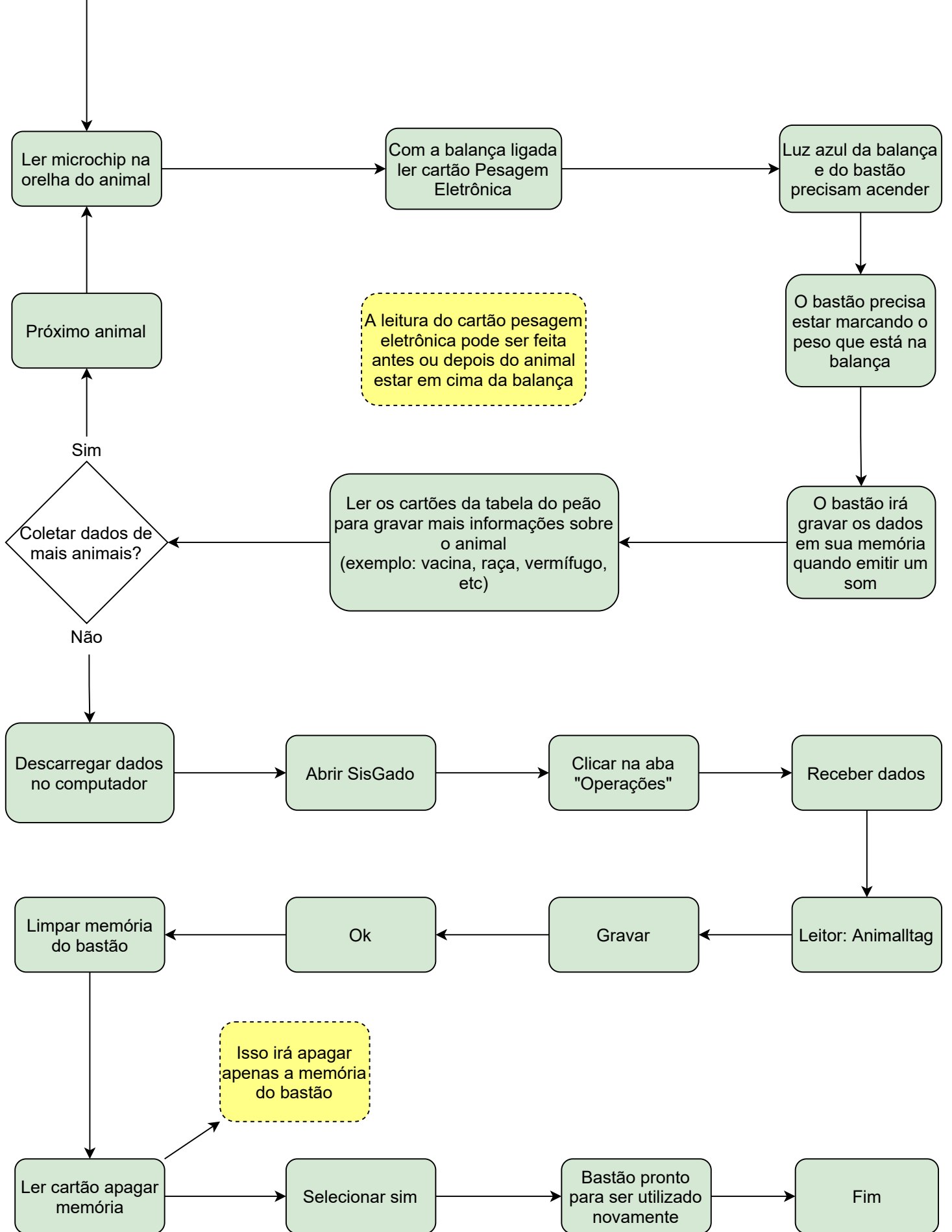




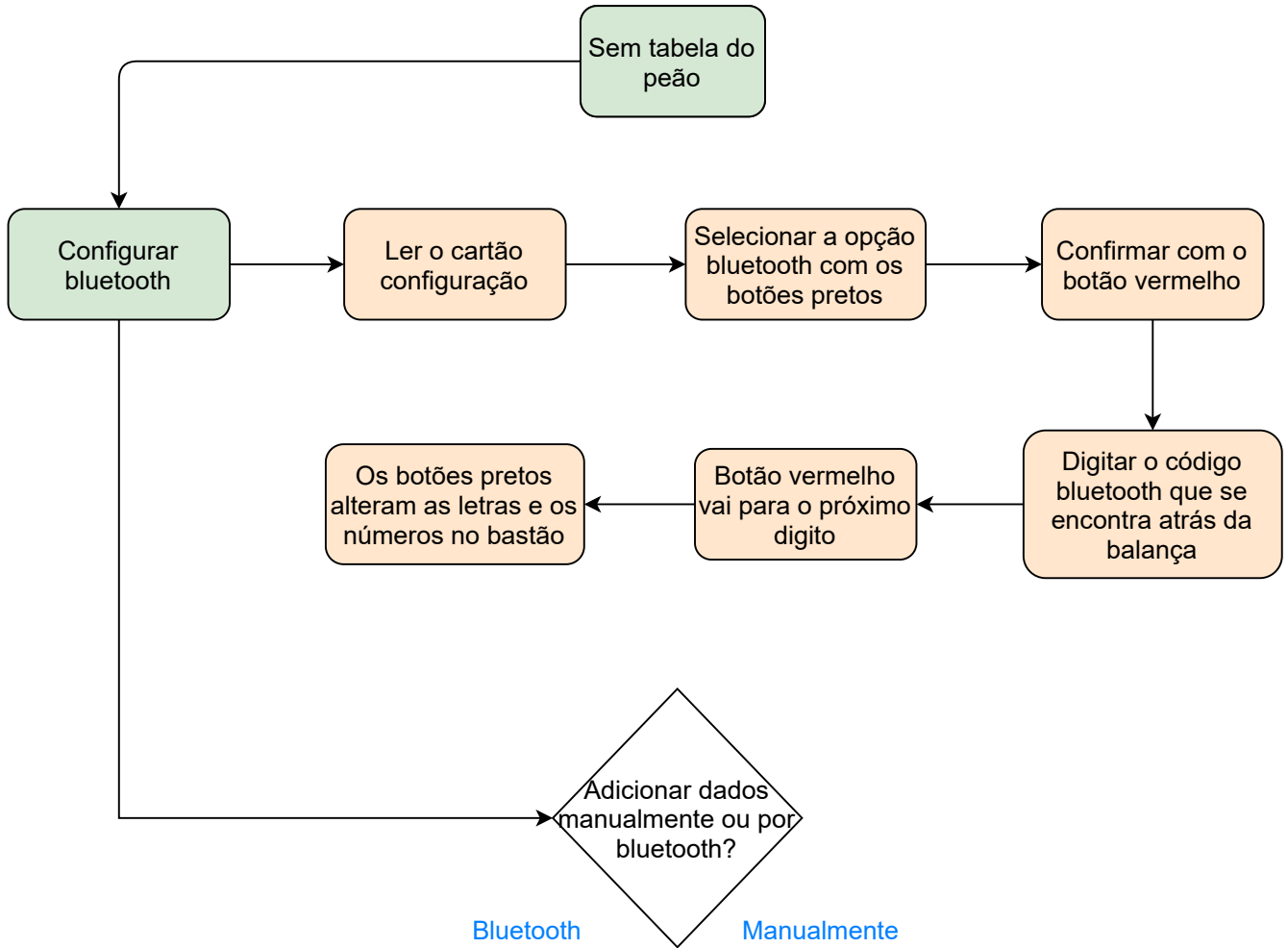


2.2 Sem Computador no Curral

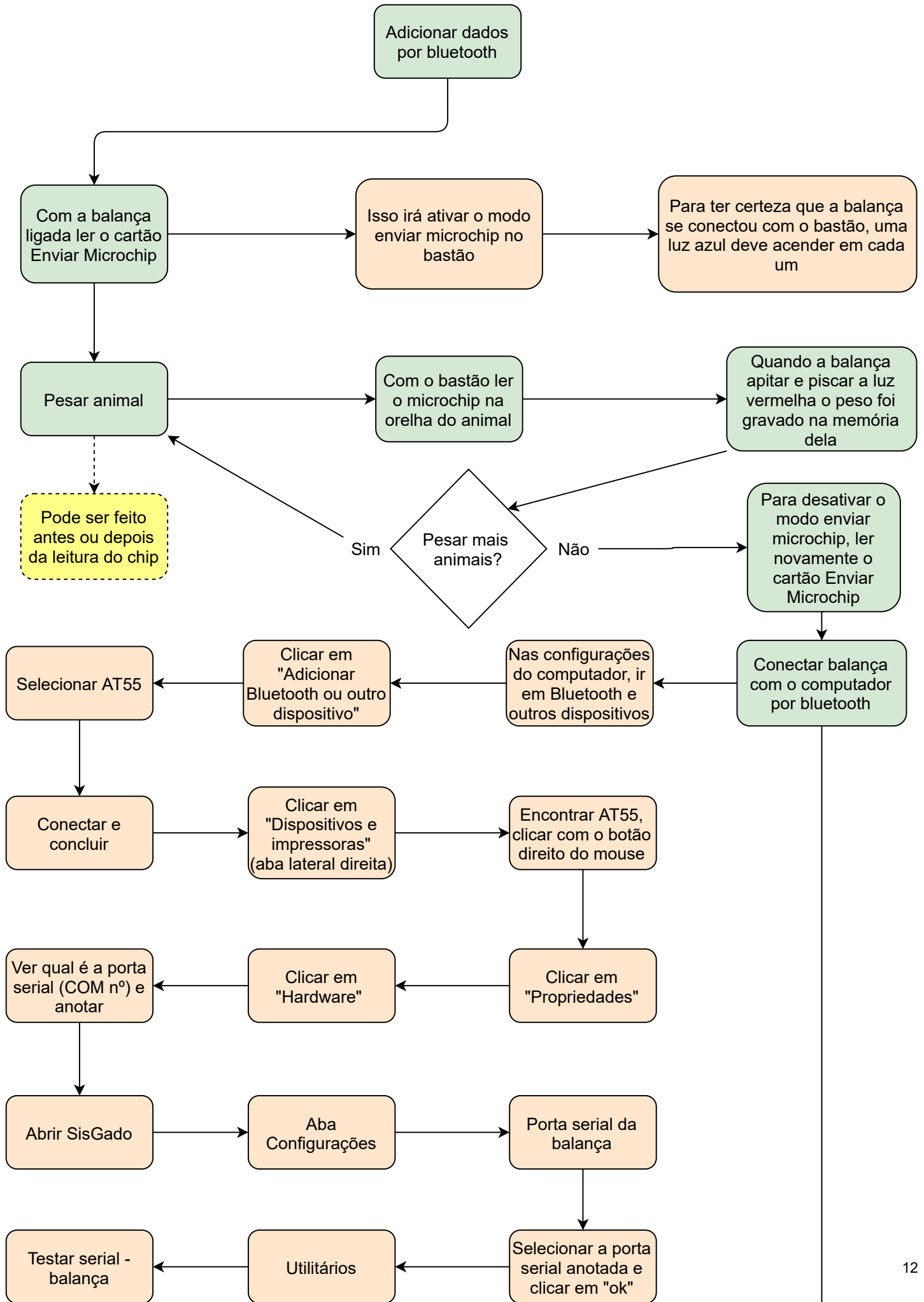


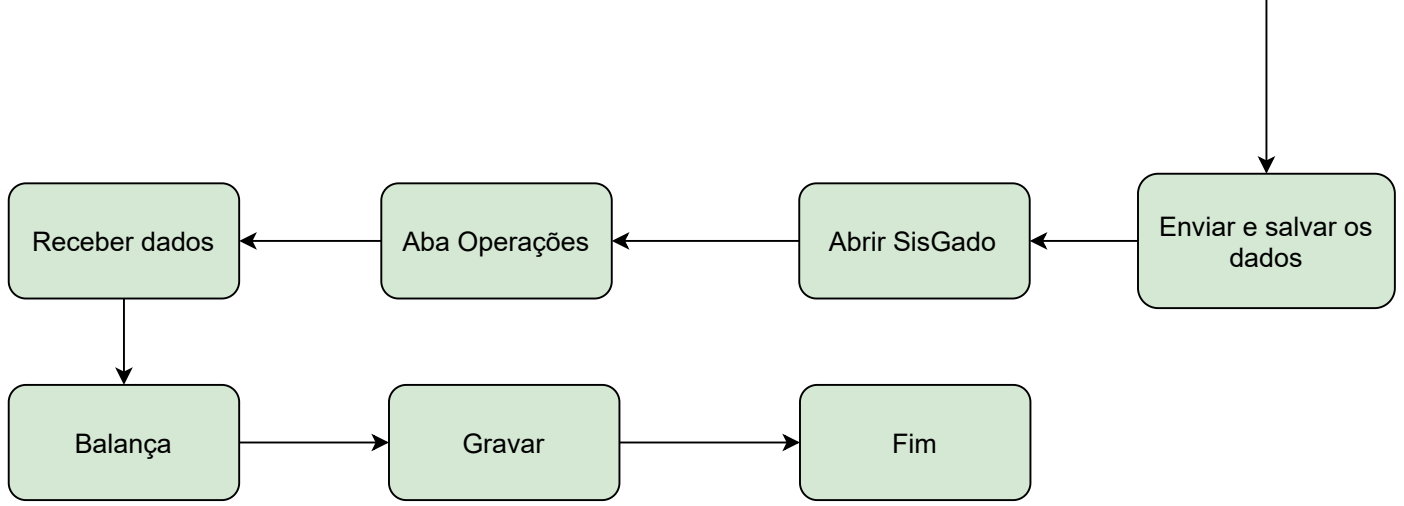


3. Sem Tabela do Peão

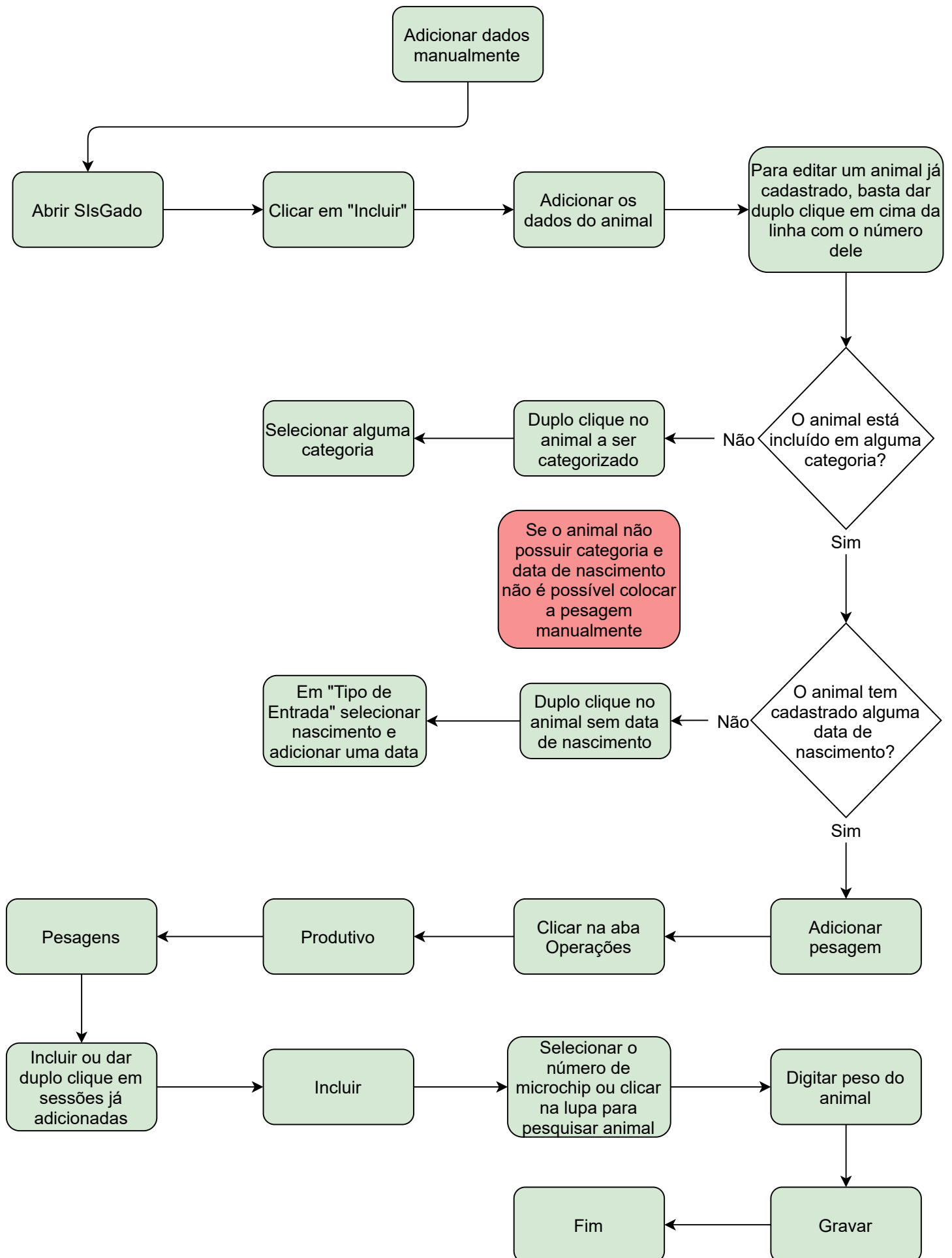


3.1. Adicionar Dados por Bluetooth

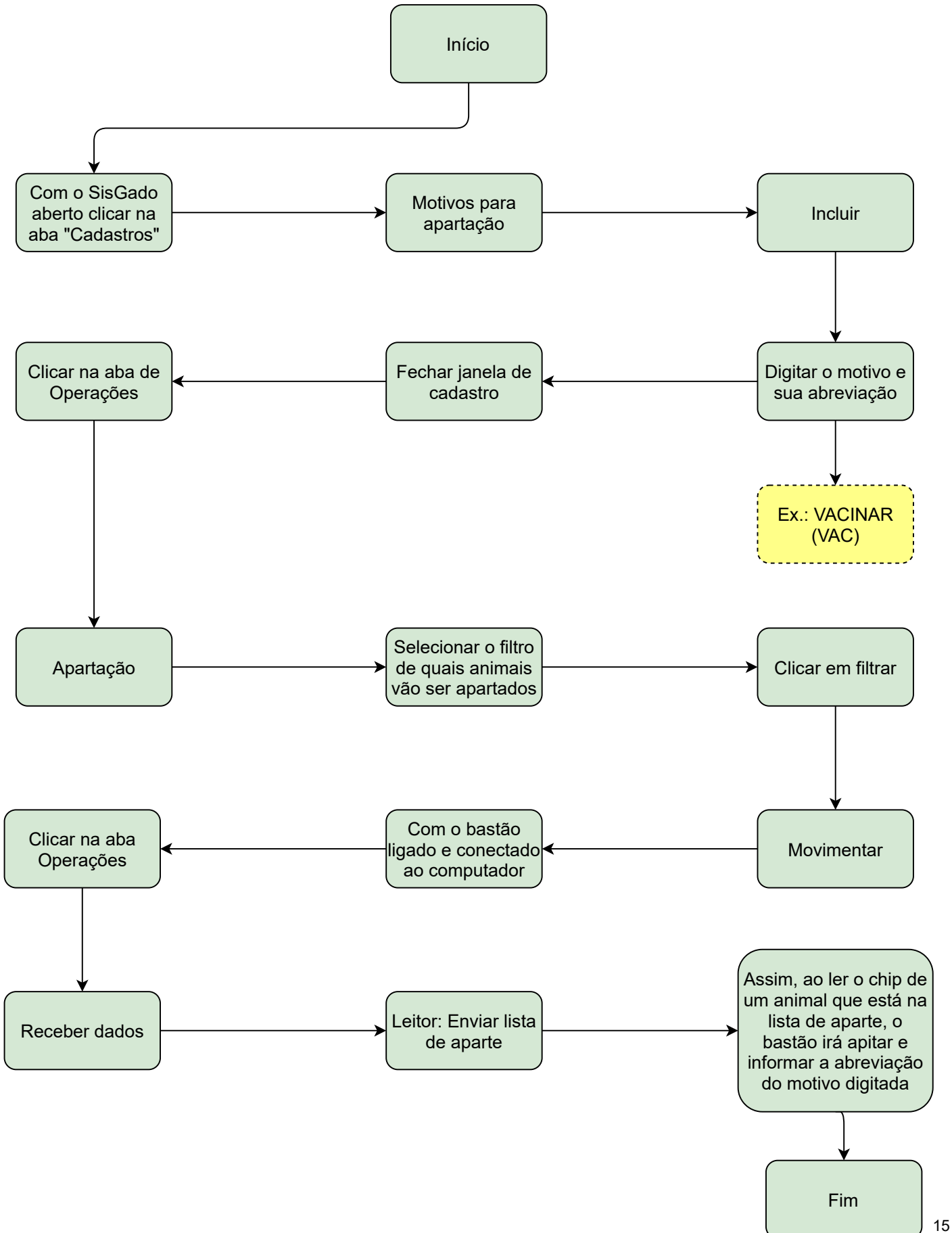




3.2. Adicionar Dados Manualmente



Outros Apartação



Transferir dados

Leia o passo a passo atentamente antes de transferir os dados para não perdê-los

